

MAXHUB

MAXHUB UC S07

All-in-one Ultra-HD USB Videobar with 8-meter Voice Pick-up Range for Small and Medium-sized Rooms



 Intelligent plug and play with all-in-one USB BYOD

 Hear and be heard everywhere with microphones featuring 8m voice pickup

 3-year worry-free hot-swap warranty

 Always see and be seen with UHD 4K video and built-in AI functions

MAKE SPACE

MAXHUB

For meetings in huddle rooms for 2 to 8 people, UC S07 features exceptional integrated capabilities in a compact USB camera bar.



2 people

5 people

8 people

INTELLIGENT PLUG AND PLAY

All-in-one

Perfect for a BYOD (Bring Your Own Device) environment, this plug and play camera bar features an integrated camera, microphone, and speaker.

MAXHUB



INTELLIGENT PLUG AND PLAY

Easy set up

All you need is two cables—one for the power supply (PoE) and a Type-C USB cable.

MAXHUB



INTELLIGENT PLUG AND PLAY

MAXHUB

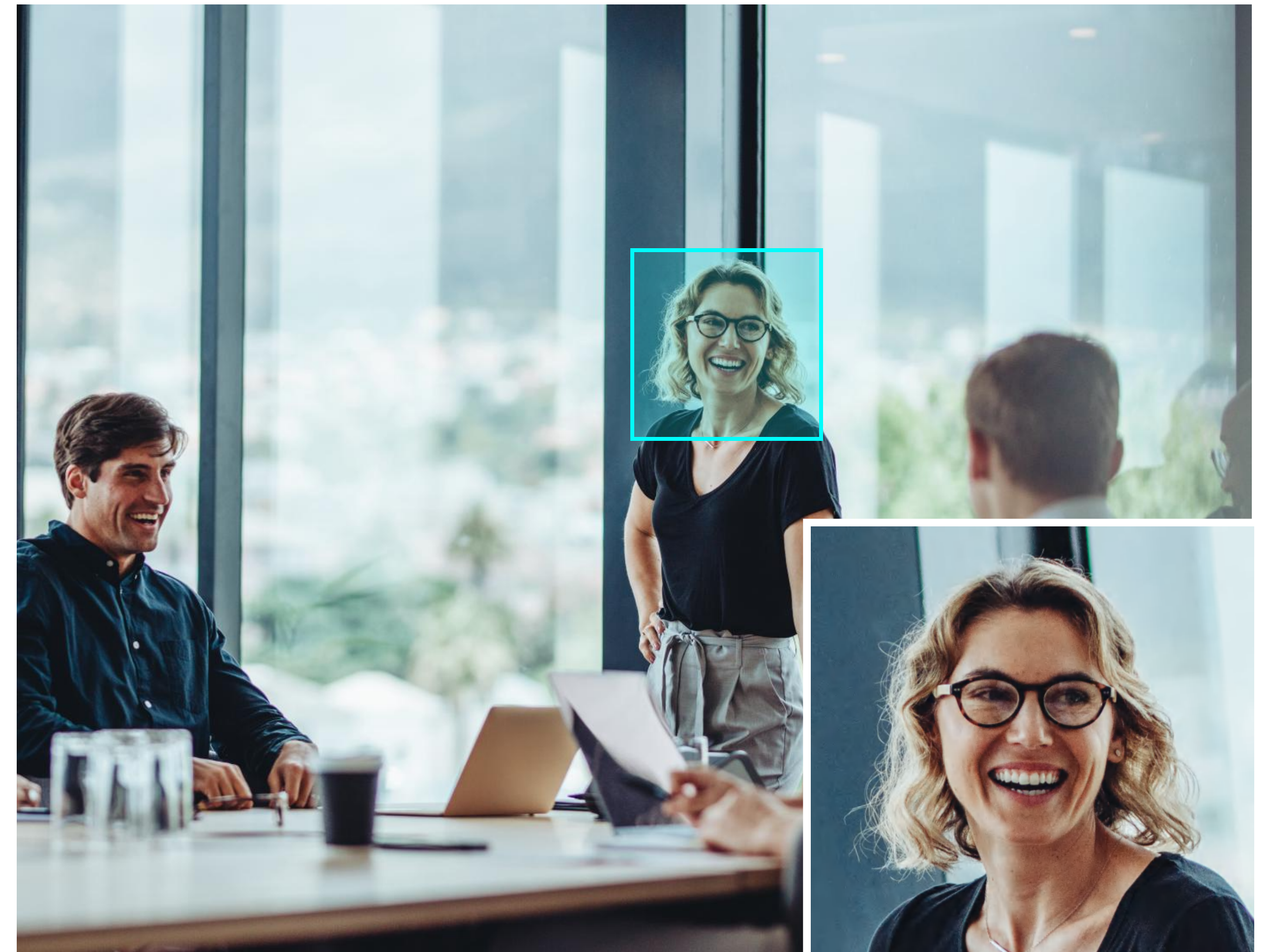
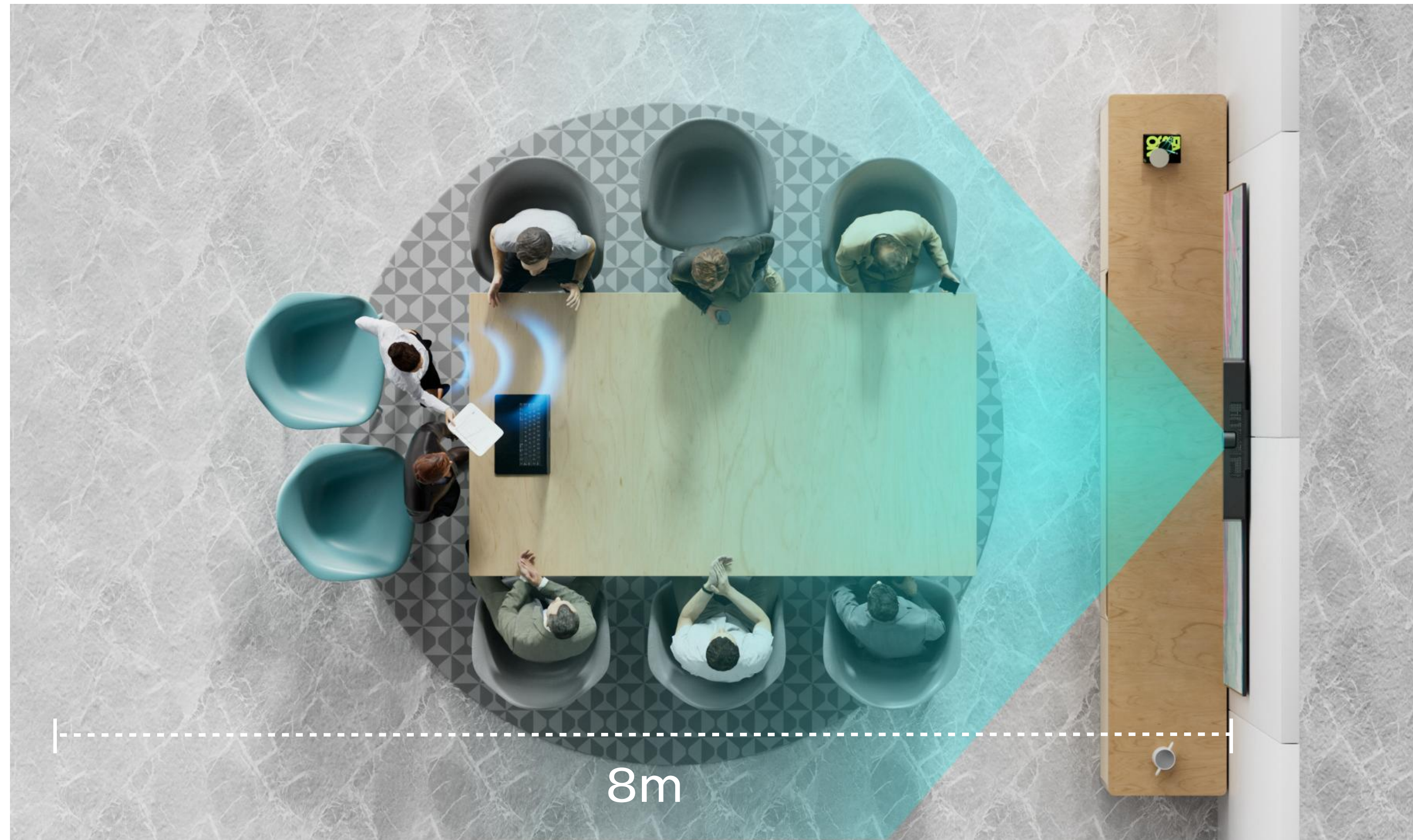


Hands-free activation

Thanks to the PIR sensor and hands-free function, the device automatically turns on when movement is detected within a 3m range. It enters standby mode when no movement is detected in a 30-minute timeframe, reducing energy consumption.

HEAR AND BE HEARD EVERYWHERE

MAXHUB



Tracking you wherever you are

Ensure better conversation with the 6 intelligent beam-forming microphones featuring 8m voice pickup. With speaker tracking and voice location locking, you and your colleagues can always get your point across loud and clear. AGC maintains constant and stable voice output regardless of the speaker's distance from the microphone.

HEAR AND BE HEARD EVERYWHERE

MAXHUB



Filter noise for what really matter

Keep the attention on you by filtering out distracting background noises like tapping, typing, or doors closing.

HEAR AND BE HEARD EVERYWHERE

MAXHUB



Hear clearly

Whether your meeting is a conversation between two people or a larger gathering of up to 8, you'll hear everyone clearly thanks to the studio-quality Hi-Fi speaker with 8 W+3 W output power. Plus, the tweeter and woofer design deliver an immersive sound experience to every corner of the room.

**SEE AND BE SEEN
ALWAYS**

See every detail

UHD 4K video offers crystal clear video images.

MAXHUB



SEE AND BE SEEN ALWAYS

MAXHUB



Razor-sharp focus from wide-angle to close-up

See everyone in the meeting room simultaneously using the wide-angle view or see a close-up of an individual attendee. The 5x digital focus is ideal for use in huddle rooms.

SEE AND BE SEEN ALWAYS

Easily auto-frame participants

Auto-framing with intelligent face detection seamlessly tracks the active speaker to keep participants engaged.

MAXHUB



DEVICE MANAGEMENT AT YOUR FINGERTIPS

MAXHUB

The screenshot displays the MAXHUB Pivot interface. At the top, there are four circular icons representing different device types: Windows, Interactive Flat Panel, Soundbar, and Android. Below these is a 'Device Management' panel. This panel includes filter buttons for 'Classroom 1', 'UTC-05:00', and 'On', along with an 'Apply filters' button. A table lists four devices with their status and notification settings.

Device ID	Status	Notification	Action
IFP-EX75	On	23:59	Details
IFP-L65EE	On	Notification	Details
IFP-L75EG	Off	16:47	Details
IFP-L65EG	Off	Notification	Details

MAXHUB Pivot

The screenshot displays the MAXHUB ALIGN interface, specifically the 'UC Device' settings. It features five sliders for adjusting camera performance: Brightness, Acutance, Contrast, Saturation, and Color. Each slider is currently set to a value of 50.

UC Device

- Brightness: 50
- Acutance: 50
- Contrast: 50
- Saturation: 50
- Color: 50

MAXHUB ALIGN

Use MAXHUB ALIGN to update and optimize the status of your video meeting devices, and fine-tune camera performance to look your best on video calls. Device can be managed remotely for your hybrid meeting needs through the MAXHUB Pivot.

EFFICIENT DEVICE MANAGEMENT

MAXHUB

Manage flexibly

Device management flexibility means onsite IT administrators can manage the device through a USB cable via MAXHUB ALIGN (software), however, remote teams can also access the device via the cloud-based MAXHUB Pivot.



PERFORMANCE YOU CAN COUNT ON

MAXHUB

Never miss out on a crucial meeting. Phenomenal quality, backed by a 3-year hot swap warranty, gives you confidence that S07 will be ready when you are.



CONTACT SALES

Interested in the MAXHUB UC S07?

Get in touch with a member of our sales team by emailing sales@maxhub.com



Specification

Camera		
Pixel		12M
Sensor		1/2.3-inch 12MP Sony sensor
<hr/>		
Resolution and Frame Rate		
H.264/MJPEG	(1) 3840 x 2160 (2) 2560 x 1440 (3) 1920 x 1080 (4) 1280 x 720 (5) 1024 x 576 (6) 960 x 540 (7) 800 x 600 (8) 640 x 480 (9) 640 x 360 (10) 480 x 270 (11) 352 x 288 (12) 320 x 240	
YUY2	(1) 640 x 480 (2) 640 x 360 (3) 480 x 270 (4) 352 x 288 (5) 320 x 240 (6) 320 x 180 (7) 160 x 120	
ZOOM		5x digital zoom
Output Format		MJPEG; YUY2; H.264
Field Of View		120° (D)
Adjustable Angle		± 15° (V)
Focus Mode		Fixed-Focus
Focus Distance		1m
Preset Accuracy		0.1°
Special Features	Auto Framing: automatic adjustment FOV to fit in all participants Speaker Tracking: voice triggered people tracking 2 Zooming Pre-sets for instant setting up	
<hr/>		
Power		
Power Requirements		12V
Overall Power(Max.)		10W
POE Power		Yes (IEEE 802.3af or 802.3at)
<hr/>		
Physical Specifications		
Dimension(Lx Hx D)		462 x 76 x 93 mm (18.2 x 3.0 x 3.7 inch)
Dimension(package)(Lx Hx D)		1pcs 538 x 160 x 169 mm (21.2 x 6.3 x 6.7 inch) 4pcs 628 x 433 x 380 mm (24.7 x 17.0 x 15.0 inch)
Maximum Sound Pressure		80dB SPL@1m
Net Weight		1.05Kg/37.04oz
Gross Weight		1pcs 2.55kg/90oz 4pcs 12.00kg/423.29oz
<hr/>		
Audio		
Speaker		
Sound Chanel		1.1
Output Power		8W + 3W
<hr/>		
Microphone		
Microphone Quantity		6
Voice Pickup Range		8m
Special Features		Noise Reduction, Echo Cancellation, Anti-Reverberation, Built-in AGC Algorithm
<hr/>		
Input/Output Port		
USB 3.0 Type-C		Connect USB host, upgrade system, etc.
Audio Out		Used for external audio equipment
DC 2.0		Used for 12V power input power supply
RJ45		Only support POE power supply
<hr/>		
Environmental Condition		
Operation Temperature		0°C - 40°C
Operation Humidity		10% - 90%RH
Storage Temperature		-20°C - 60°C
Storage Humidity		10% - 90%RH
Altitude		Below 5000 meters
<hr/>		
What's In The Box		
included		1 x USB Cable (1.8m/70.9 inch), 1 x Remote Control , 1 x Power Adapter, 1 x Wall-mounted Components, 1 x Peeping Cover
<hr/>		
PIR Sensor	In power-on mode, it will automatically enter standby state If no moving object is detected within 3 meters within 30 minutes, minimizing energy consumption; In standby mode, it automatically starts up when detecting moving objects within 3 meters, simplifying the setup process.	